



PICKLEMAN'S GOURMET CAFE

NUTRITION GUIDE





REGULAR SANDWICHES WHITE BREAD	Calories	Calories from Fat	Total Fat (g)	Saturated Fat (g)	Trans Fat (g)	Cholesterol (mg)	Sodium (mg)	Total Carbs (g)	Dietary Fiber (g)	Sugars (g)	Protein (g)	Allergens
#1 Turkey	640	225	25	8	0	60	1550	69	4	8	31	
#2 Ham	640	252	28	9	0	60	1750	67	4	6	29	
#3 Veggie	640	252	28	9	0	60	1750	67	4	6	29	
#4 Chicken Salad	740	279	31	9	0	70	1340	77	6	13	31	
#5 Turkey Bacon Club	800	283	37	12	0	80	2550	69	4	8	43	
#6 Asiago Chicken	860	360	42	12	0	126	2580	69	4	5	50	
#7 Hodge Podge	870	319	41	15	0	134	3140	71	4	10	52	
#8 Cafe Club	710	200	28	9	0	88	2260	70	4	9	41	
#9 Italian Beef	480	40	10	2	0	90	1360	61	3	3	34	
#10 Cuban	720	205	28	13	0	106	2450	66	3	6	48	
#11 Italian Club	910	409	45	18	0	115	2752	70	4	8	41	
#12 Smokehouse Stack	970	455	51	19	0	105	2640	71	4	8	51	
#13 BLTC	1020	510	58	19	0	91	3630	66	4	5	52	
#14 BBQ Pork	710	216	25	12	0	78	2180	80	3	15	38	
#15 Buffalo Chicken	890	383	44	13	0	123	3060	73	5	5	47	
#16 Grilled Cheese	640	225	26	12	0	67	1340	64	3	3	32	
#17 Chipotle Chicken	750	276	32	10	0	110	1750	70	5	5	44	
#18 The Big Tuna LTO	700	267	31	9	0	59	1430	69	5	6	33	
Pizza Guy	780	371	42	19	0	70	2160	69	4	5	27	

KEY GUIDE

- Vegetarian
- Contains Fish
- Contains Dairy
- Contains Egg
- Contains Sesame
- Gluten Friendly
- Contains Nuts
- Contains Soy
- Contains Wheat



Please use this nutritional allergen guide to help you make informed decisions based on your dietary needs. Individual foods may come into contact with one another during preparation and ingredients may have been made in facilities with other allergens, which is not reflected on this chart. While our staff is here to help, they are not trained dietitians and not required to be experts on this matter. If you have any questions on our menu please feel free to reach out directly at contact@picklemans.com and we will assist you.



REGULAR SANDWICHES WHEAT BREAD	Calories	Calories from Fat	Total Fat (g)	Saturated Fat (g)	Trans Fat (g)	Cholesterol (mg)	Sodium (mg)	Total Carbs (g)	Dietary Fiber (g)	Sugars (g)	Protein (g)	Allergens
#1 Turkey	670	225	25	8	0	60	1600	74	5	9	32	
#2 Ham	670	252	28	9	0	60	1820	72	5	7	30	
#3 Veggie	660	270	30	9	0	32	1110	75	7	6	21	
#4 Chicken Salad	770	279	31	9	0	70	1410	82	7	14	32	
#5 Turkey Bacon Club	830	283	37	12	0	80	2620	74	5	9	44	
#6 Asiago Chicken	890	360	42	12	0	126	2650	74	5	6	51	
#7 Hodge Podge	902	319	41	15	0	134	3210	76	5	11	53	
#8 Cafe Club	740	200	28	9	0	88	2330	75	5	10	42	
#9 Italian Beef	510	40	10	2	0	90	1430	66	4	4	35	
#10 Cuban	750	205	28	13	0	106	2520	71	4	7	49	
#11 Italian Club	940	409	45	18	0	115	2820	75	5	9	42	
#12 Smokehouse Stack	1000	455	51	19	0	105	2710	76	5	9	52	
#13 BLTC	1050	510	58	19	0	91	3700	71	5	6	53	
#14 BBQ Pork	740	216	25	12	0	78	2250	85	4	16	39	
#15 Buffalo Chicken	920	383	44	13	0	123	3130	78	6	6	48	
#16 Grilled Cheese	670	225	26	12	0	67	1410	69	4	4	33	
#17 Chipotle Chicken	780	276	32	10	0	110	1820	74	5	6	45	
#18 The Big Tuna LTO	730	267	31	9	0	59	1500	74	6	7	34	
Pizza Guy	810	371	42	19	0	70	2230	74	5	6	28	

KEY GUIDE

- Vegetarian
- Contains Fish
- Contains Dairy
- Contains Egg
- Contains Sesame
- Gluten Friendly
- Contains Nuts
- Contains Soy
- Contains Wheat



Please use this nutritional allergen guide to help you make informed decisions based on your dietary needs. Individual foods may come into contact with one another during preparation and ingredients may have been made in facilities with other allergens, which is not reflected on this chart. While our staff is here to help, they are not trained dietitians and not required to be experts on this matter. If you have any questions on our menu please feel free to reach out directly at contact@picklemans.com and we will assist you.



HALF SANDWICHES WHITE BREAD	Calories	Calories from Fat	Total Fat (g)	Saturated Fat (g)	Trans Fat (g)	Cholesterol (mg)	Sodium (mg)	Total Carbs (g)	Dietary Fiber (g)	Sugars (g)	Protein (g)	Allergens
#1 Turkey	320	114	13	4	0	33	770	32	1	5	16	
#2 Ham	320	126	15	4	0	33	880	31	1	4	15	
#3 Veggie	290	135	16	4	0	19	490	28	1	4	9	
#4 Chicken Salad	410	184	21	7	0	51	760	33	1	8	20	
#5 Turkey Bacon Club	400	168	19	6	0	43	1270	32	1	5	22	
#6 Asiago Chicken	460	231	27	7	0	73	1480	27	0	3	28	
#7 Hodge Podge	440	193	22	7	0	72	1600	32	1	5	28	
#8 Cafe Club	360	126	15	4	0	47	1130	32	1	5	21	
#9 Italian Beef	230	38	5	1	0	45	660	28	1	2	17	
#10 Cuban	350	198	21	6	0	63	1320	37	2	4	24	
#11 Italian Club	460	238	27	8	0	62	1410	32	1	4	23	
#12 Smokehouse Stack	470	237	25	10	0	53	1300	33	2	5	25	
#13 BLTC	500	274	31	10	0	49	1990	26	0	4	27	
#14 BBQ Pork	340	117	12	6	0	39	1070	38	1	8	19	
#15 Buffalo Chicken	450	228	26	6	0	66	1010	29	0	4	24	
#16 Grilled Cheese	270	107	12	6	0	32	600	25	0	2	14	
#17 Chipotle Chicken	360	159	19	5	0	60	890	28	0	4	21	
#18 The Big Tuna LTO	350	143	16	4	0	32	720	33	1	5	17	
Pizza Guy	410	213	24	11	0	43	1340	30	1	4	17	

KEY GUIDE

- Vegetarian
- Contains Fish
- Contains Dairy
- Contains Egg
- Contains Sesame
- Gluten Friendly
- Contains Nuts
- Contains Soy
- Contains Wheat



Please use this nutritional allergen guide to help you make informed decisions based on your dietary needs. Individual foods may come into contact with one another during preparation and ingredients may have been made in facilities with other allergens, which is not reflected on this chart. While our staff is here to help, they are not trained dietitians and not required to be experts on this matter. If you have any questions on our menu please feel free to reach out directly at contact@picklemans.com and we will assist you.



HALF SANDWICHES WHEAT BREAD	Calories	Calories from Fat	Total Fat (g)	Saturated Fat (g)	Trans Fat (g)	Cholesterol (mg)	Sodium (mg)	Total Carbs (g)	Dietary Fiber (g)	Sugars (g)	Protein (g)	Allergens
#1 Turkey	330	114	13	4	0	33	790	34	2	5	17	
#2 Ham	330	126	15	4	0	33	900	33	2	4	16	
#3 Veggie	300	135	16	4	0	19	510	30	2	4	10	
#4 Chicken Salad	420	184	21	7	0	51	780	35	2	8	21	
#5 Turkey Bacon Club	410	168	19	6	0	43	1290	34	2	5	23	
#6 Asiago Chicken	470	231	27	7	0	73	1500	29	1	3	29	
#7 Hodge Podge	450	193	22	7	0	72	1620	34	2	5	29	
#8 Cafe Club	370	126	15	4	0	47	1150	34	2	5	22	
#9 Italian Beef	240	38	5	1	0	45	680	30	2	2	18	
#10 Cuban	360	198	21	6	0	63	1340	39	3	4	25	
#11 Italian Club	470	238	27	8	0	62	1430	34	2	4	24	
#12 Smokehouse Stack	480	237	25	10	0	53	1320	35	3	5	26	
#13 BLTC	510	274	31	10	0	49	2010	28	1	4	28	
#14 BBQ Pork	350	117	12	6	0	39	1090	40	2	8	20	
#15 Buffalo Chicken	460	228	26	6	0	66	1030	31	1	4	25	
#16 Grilled Cheese	280	107	12	6	0	32	620	27	1	2	15	
#17 Chipotle Chicken	370	159	19	5	0	60	910	30	1	4	21	
#18 The Big Tuna LTO	360	143	16	4	0	32	740	35	2	5	22	
Pizza Guy	420	213	24	11	0	43	1360	32	2	4	17	

KEY GUIDE

- Vegetarian
- Contains Fish
- Contains Dairy
- Contains Egg
- Contains Sesame
- Gluten Friendly
- Contains Nuts
- Contains Soy
- Contains Wheat



Please use this nutritional allergen guide to help you make informed decisions based on your dietary needs. Individual foods may come into contact with one another during preparation and ingredients may have been made in facilities with other allergens, which is not reflected on this chart. While our staff is here to help, they are not trained dietitians and not required to be experts on this matter. If you have any questions on our menu please feel free to reach out directly at contact@picklemans.com and we will assist you.



ROMAINE LETTUCE WRAPS	Calories	Calories from Fat	Total Fat (g)	Saturated Fat (g)	Trans Fat (g)	Cholesterol (mg)	Sodium (mg)	Total Carbs (g)	Dietary Fiber (g)	Sugars (g)	Protein (g)	Allergens
#1 Turkey	325	227	21	8	0	60	850	11	3	6	29	
#2 Ham	325	254	24	9	0	60	1050	9	3	4	27	
#3 Veggie	360	250	28	10	0	40	430	12	5	4	16	
#4 Chicken Salad	480	280	32	11	0	80	1870	11	3	6	36	
#5 Turkey Bacon Club	485	285	33	12	0	80	1850	11	3	6	41	
#6 Asiago Chicken	530	330	36	14	0	135	1930	10	2	2	38	
#7 Hodge Podge	555	321	37	15	0	134	2440	13	3	8	50	
#8 Cafe Club	395	202	24	9	0	88	1560	12	3	7	39	
#9 Italian Beef	165	42	18	2	0	90	1090	3	2	1	32	
#10 Cuban	405	207	24	13	0	106	1750	8	2	4	46	
#11 Italian Club	590	411	46	18	0	115	2050	12	3	6	39	
#12 Smokehouse Stack	640	419	46	19	0	105	1930	10	1	5	42	
#13 BLTC	380	180	20	12	0	78	1470	19	0	12	29	
#14 BBQ Pork	380	180	20	12	0	80	1470	19	0	12	29	
#15 Buffalo Chicken	560	350	39	12	0	105	2570	14	3	3	35	
#16 Grilled Cheese	260	150	16	10	0	60	570	7	2	1	21	
#17 Chipotle Chicken	420	250	27	9	0	95	1280	11	2	3	22	
#18 The Big Tuna LTO	430	260	29	10	0	70	810	11	4	4	29	
Pizza Guy	330	200	22	22	0	70	1220	11	3	3	21	

KEY GUIDE

- Vegetarian
- Contains Fish
- Contains Dairy
- Contains Egg
- Contains Sesame
- Gluten Friendly
- Contains Nuts
- Contains Soy
- Contains Wheat



Please use this nutritional allergen guide to help you make informed decisions based on your dietary needs. Individual foods may come into contact with one another during preparation and ingredients may have been made in facilities with other allergens, which is not reflected on this chart. While our staff is here to help, they are not trained dietitians and not required to be experts on this matter. If you have any questions on our menu please feel free to reach out directly at contact@picklemans.com and we will assist you.

All salad nutritional information is listed without dressings.



FULL SALADS	Calories	Calories from Fat	Total Fat (g)	Saturated Fat (g)	Trans Fat (g)	Cholesterol (mg)	Sodium (mg)	Total Carbs (g)	Dietary Fiber (g)	Sugars (g)	Protein (g)	Allergens
Asiago Caesar (Romaine)	260	120	14	4	0	20	730	31	3	6	15	Vegetarian, Dairy, Soy, Wheat
Avo-Cobb (Romaine)	570	380	43	14	0	230	1110	25	11	4	26	Dairy, Egg, Wheat
Buffalo Chicken (Romaine)	410	180	20	6	0	80	2880	26	5	4	31	Dairy, Soy, Wheat
Cafe Chop (Romaine)	270	66	7	4	0	84	1410	21	4	8	33	Dairy, Wheat
Chicken Caesar (Romaine)	380	150	17	5	0	80	1390	34	3	6	35	Dairy, Soy, Wheat
Garden Chop (Romaine)	230	120	13	5	0	25	700	18	6	4	10	Vegetarian, Dairy, Wheat
Italian Chop (Romaine)	510	243	27	9	0	104	2250	23	5	6	32	Dairy, Wheat
Walnut Cran (Spinach)	520	310	34	9	0	210	590	38	8	27	20	Vegetarian, Gluten Friendly, Nuts, Dairy, Soy, Wheat

HALF SALADS	Calories	Calories from Fat	Total Fat (g)	Saturated Fat (g)	Trans Fat (g)	Cholesterol (mg)	Sodium (mg)	Total Carbs (g)	Dietary Fiber (g)	Sugars (g)	Protein (g)	Allergens
Asiago Caesar (Romaine)	170	80	8	2.5	0	10	470	20	2	3	9	Vegetarian, Dairy, Soy, Wheat
Avo-Cobb (Romaine)	450	310	34	10	0	210	720	22	9	3	19	Dairy, Egg, Wheat
Buffalo Chicken (Romaine)	270	110	12	3	0	55	1690	19	3	2	22	Dairy, Soy, Wheat
Cafe Chop (Romaine)	210	72	9	4.5	0	47	890	17	2	6	16	Dairy, Wheat
Chicken Caesar (Romaine)	290	100	11	3.5	0	90	1130	23	2	3	29	Dairy, Soy, Wheat
Garden Chop (Romaine)	190	100	11	5	0	25	480	14	3	1	9	Vegetarian, Dairy, Wheat
Italian Chop (Romaine)	300	158	18	6	0	51	1340	19	3	5	17	Dairy, Wheat
Walnut Cran (Spinach)	350	220	24	6	0	200	370	23	5	16	15	Vegetarian, Gluten Friendly, Nuts, Dairy, Soy, Wheat

KEY GUIDE

- Vegetarian
- Contains Fish
- Contains Dairy
- Contains Egg
- Contains Sesame
- Gluten Friendly
- Contains Nuts
- Contains Soy
- Contains Wheat



Please use this nutritional allergen guide to help you make informed decisions based on your dietary needs. Individual foods may come into contact with one another during preparation and ingredients may have been made in facilities with other allergens, which is not reflected on this chart. While our staff is here to help, they are not trained dietitians and not required to be experts on this matter. If you have any questions on our menu please feel free to reach out directly at contact@picklemans.com and we will assist you.



12" THIN CRUST PIZZA	Calories	Calories from Fat	Total Fat (g)	Saturated Fat (g)	Trans Fat (g)	Cholesterol (mg)	Sodium (mg)	Total Carbs (g)	Dietary Fiber (g)	Sugars (g)	Protein (g)	Allergens
Cheese	1100	470	52	22	0	105	1700	107	2	2	50	
Pepperoni	1310	650	72	31	0	160	2410	107	2	2	58	
Sausage	1470	780	86	37	0	180	2940	113	4	2	63	
Veggie	1150	520	58	18	0	70	1950	115	6	6	41	
BBQ Chicken	1330	440	49	20	0	190	2880	144	0	31	78	
Asiago Chicken	1780	940	104	29	0	280	4200	110	0	3	103	
Buffalo Chicken	1380	580	64	23	0	250	3990	109	1	0	93	
The Hog	1610	760	85	30	0	270	3910	120	3	5	91	
Chipotle Beef	1510	805	89	32	0	202	2710	104	0	3	65	

10" CAULIFLOWER CRUST PIZZA	Calories	Calories from Fat	Total Fat (g)	Saturated Fat (g)	Trans Fat (g)	Cholesterol (mg)	Sodium (mg)	Total Carbs (g)	Dietary Fiber (g)	Sugars (g)	Protein (g)	Allergens
Cheese	770	280	32	18	0	120	1970	82	5	5	39	
Pepperoni	920	400	45	25	0	155	2450	82	5	5	44	
Sausage	960	440	49	26	0	155	2600	85	5	5	46	
Veggie	950	410	45	21	0	120	2520	92	8	9	40	
BBQ Chicken	920	250	28	15	0	170	2660	165	3	29	54	
Asiago Chicken	1190	580	65	23	0	220	3480	82	3	5	70	
Buffalo Chicken	930	350	38	18	0	195	3630	82	4	3	62	
The Hog	1140	520	57	27	0	218	3490	91	6	7	63	
Chipotle Beef	1150	580	64	27	0	215	2920	81	3	6	57	

KEY GUIDE

- Vegetarian
- Contains Fish
- Contains Dairy
- Contains Egg
- Contains Sesame
- Gluten Friendly
- Contains Nuts
- Contains Soy
- Contains Wheat

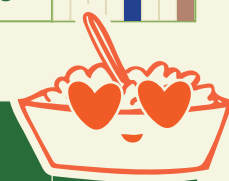


Please use this nutritional allergen guide to help you make informed decisions based on your dietary needs. Individual foods may come into contact with one another during preparation and ingredients may have been made in facilities with other allergens, which is not reflected on this chart. While our staff is here to help, they are not trained dietitians and not required to be experts on this matter. If you have any questions on our menu please feel free to reach out directly at contact@picklemans.com and we will assist you.



8 oz SOUPS	Calories	Calories from Fat	Total Fat (g)	Saturated Fat (g)	Trans Fat (g)	Cholesterol (mg)	Sodium (mg)	Total Carbs (g)	Dietary Fiber (g)	Sugars (g)	Protein (g)	Allergens
Broccoli Cheese	230	145	16	9	0	55	800	14	1	4	9	
Tomato Basil	280	220	24	10	0	50	790	14	2	8	3	

12 oz SOUPS	Calories	Calories from Fat	Total Fat (g)	Saturated Fat (g)	Trans Fat (g)	Cholesterol (mg)	Sodium (mg)	Total Carbs (g)	Dietary Fiber (g)	Sugars (g)	Protein (g)	Allergens
Broccoli Cheese	350	215	24	14	0.5	83	1200	21	2	6	14	
Tomato Basil	420	320	36	15	0	75	1190	21	3	12	5	



MAC & CHEESE	Calories	Calories from Fat	Total Fat (g)	Saturated Fat (g)	Trans Fat (g)	Cholesterol (mg)	Sodium (mg)	Total Carbs (g)	Dietary Fiber (g)	Sugars (g)	Protein (g)	Allergens
White Cheddar	340	155	17	10	0	60	1140	34	1	5	13	
BBQ Pulled Pork	470	190	21	13	4	81	1460	48	3	17	22	
Spicy Pork	520	295	32	16	5	95	1540	35	4	7	26	
Buffalo Chicken	570	310	36	14	2	102	2470	38	2	5	23	
Chicken Bacon Ranch	570	320	37	15	2	106	1880	35	1	5	27	
Chipotle Chicken	500	265	29	12	2	96	1540	35	1	6	24	

KEY GUIDE

- Vegetarian
- Contains Fish
- Contains Dairy
- Contains Egg
- Contains Sesame
- Gluten Friendly
- Contains Nuts
- Contains Soy
- Contains Wheat



Please use this nutritional allergen guide to help you make informed decisions based on your dietary needs. Individual foods may come into contact with one another during preparation and ingredients may have been made in facilities with other allergens, which is not reflected on this chart. While our staff is here to help, they are not trained dietitians and not required to be experts on this matter. If you have any questions on our menu please feel free to reach out directly at contact@picklemans.com and we will assist you.



SIDES	Calories	Calories from Fat	Total Fat (g)	Saturated Fat (g)	Trans Fat (g)	Cholesterol (mg)	Sodium (mg)	Total Carbs (g)	Dietary Fiber (g)	Sugars (g)	Protein (g)	Allergens
Garlic Cheese Bread	670	290	32	15	0	46	1794	65	4	5	26	Vegetarian, Contains Dairy, Contains Wheat
Chocolate Chip Cookie	220	100	11	5	0	15	210	30	1	21	2	Vegetarian, Contains Dairy, Contains Egg, Contains Wheat
Pickle	0	0	0	0	0	0	160	0	0	0	0	Vegetarian, Gluten Friendly
Side Chicken Salad	310	200	22	0	0	45	380	17	2	12	12	Vegetarian, Contains Dairy, Contains Egg, Contains Wheat
Side Tuna Salad	290	190	21	4	0	41	590	6	1	2	19	Contains Fish, Contains Dairy, Contains Egg, Contains Wheat
Grated Parmesan (5gr)	20	15	2	0	0	5	70	0	0	0	1	Vegetarian, Contains Dairy
Boulder Canyon Avo Oil Classic Sea Salt	190	100	11	1.5	0	0	150	20	2	0	4	Vegetarian, Gluten Friendly
Boulder Canyon Hickory Barbeque	220	110	12	1	0	0	290	25	2	2	3	Vegetarian, Gluten Friendly
Boulder Canyon Jalapeno Cheddar	230	115	13	1.5	0	0	330	25	2	1	4	Vegetarian, Contains Dairy
Boulder Canyon Avo Oil Spicy Green Chili	180	90	10	1.5	0	0	260	20	2	1	3	Vegetarian, Gluten Friendly
Boulder Canyon Sea Salt & Cracked Pepper	220	110	12	1	0	0	270	25	2	1	3	Vegetarian, Gluten Friendly
Boulder Canyon Malt Vinegar & Sea Salt	220	110	12	1	0	0	340	25	2	1	3	Vegetarian, Gluten Friendly
Boulder Canyon Olive Oil Sea Salt	230	115	13	2	0	0	180	24	2	0	4	Vegetarian, Gluten Friendly

KEY GUIDE

- Vegetarian
- Contains Fish
- Contains Dairy
- Contains Egg
- Contains Sesame
- Gluten Friendly
- Contains Nuts
- Contains Soy
- Contains Wheat



Please use this nutritional allergen guide to help you make informed decisions based on your dietary needs. Individual foods may come into contact with one another during preparation and ingredients may have been made in facilities with other allergens, which is not reflected on this chart. While our staff is here to help, they are not trained dietitians and not required to be experts on this matter. If you have any questions on our menu please feel free to reach out directly at contact@picklemans.com and we will assist you.



BEVERAGES	Calories	Calories from Fat	Total Fat (g)	Saturated Fat (g)	Trans Fat (g)	Cholesterol (mg)	Sodium (mg)	Total Carbs (g)	Dietary Fiber (g)	Sugars (g)	Protein (g)	Allergens
Coke	250	0	0	0	0	0	0	68	0	68	0	
Diet Coke	0	0	0	0	0	0	25	0	0	0	0	
Coke Zero	0	0	0	0	0	0	67	0	0	0	0	
Dr. Pepper	230	0	0	0	0	0	75	65	0	63	0	
Fanta	270	0	0	0	0	0	92	73	0	72	0	
Blue Powerade	130	0	0	0	0	0	400	35	0	35	0	
Sprite	250	0	0	0	0	0	50	65	0	65	0	
Sweet Tea	230	0	0	0	0	0	0	60	0	60	0	
Unsweetened Tea	0	0	0	0	0	0	0	0	0	0	0	
Lemonade	360	0	0	0	0	0	0	87	0	84	0	
Strawberry Lemonade	360	0	0	0	0	0	0	88	0	85	0	

KEY GUIDE

- Vegetarian
- Contains Fish
- Contains Dairy
- Contains Egg
- Contains Sesame
- Gluten Friendly
- Contains Nuts
- Contains Soy
- Contains Wheat



Please use this nutritional allergen guide to help you make informed decisions based on your dietary needs. Individual foods may come into contact with one another during preparation and ingredients may have been made in facilities with other allergens, which is not reflected on this chart. While our staff is here to help, they are not trained dietitians and not required to be experts on this matter. If you have any questions on our menu please feel free to reach out directly at contact@picklemans.com and we will assist you.



3 oz DRESSINGS	Calories	Calories from Fat	Total Fat (g)	Saturated Fat (g)	Trans Fat (g)	Cholesterol (mg)	Sodium (mg)	Total Carbs (g)	Dietary Fiber (g)	Sugars (g)	Protein (g)	Allergens
Italian Vinaigrette	400	350	40	0	0	0	440	12	0	8	0	
Twisted Citrus	430	410	48	0	0	0	530	0	0	0	0	
Balsamic Vinaigrette	570	540	63	0	0	0	100	7	0	7	0	
Chipotle Ranch	340	310	34	5	0	20	820	8	0	2	2	
Classic Ranch	320	300	33	5	5	20	670	5	0	2	2	
Asiago Caesar	420	390	42	14	0	30	1200	6	0	3	3	
Vinegar & Oil	360	360	39	15	0	0	0	0	0	0	0	
Honey Dijon	50	0	0	0	0	0	240	12	0	8	0	
Marinara	30	5	.5	41	0	0	460	5	1	2	1	

2 tbsp SAUCES	Calories	Calories from Fat	Total Fat (g)	Saturated Fat (g)	Trans Fat (g)	Cholesterol (mg)	Sodium (mg)	Total Carbs (g)	Dietary Fiber (g)	Sugars (g)	Protein (g)	Allergens
BBQ Sauce	60	0	0	0	0	0	240	15	0	12	0	
Buffalo Sauce	50	20	2	0	0	0	880	1	0	0	0	
Honey Mustard	50	0	0	0	0	0	240	12	0	8	0	
Mayo	100	100	11	0	0	5	70	1	0	0	0	
Mustard	0	0	0	0	0	0	160	0	0	0	0	
Spicy Mustard	10	0	0	0	0	0	160	0	0	0	0	
Pepper Oil	240	240	26	5	0	0	0	0	0	0	0	
Garlic Butter	380	270	41	20	0	0	640	1	0	0	0	

KEY GUIDE

- Vegetarian
- Contains Fish
- Contains Dairy
- Contains Egg
- Contains Sesame
- Gluten Friendly
- Contains Nuts
- Contains Soy
- Contains Wheat



WARNING Please use this nutritional allergen guide to help you make informed decisions based on your dietary needs. Individual foods may come into contact with one another during preparation and ingredients may have been made in facilities with other allergens, which is not reflected on this chart. While our staff is here to help, they are not trained dietitians and not required to be experts on this matter. If you have any questions on our menu please feel free to reach out directly at contact@picklemans.com and we will assist you.